



Soybean Row Width & Population Study – 2009

Planted: May 28, 2009
Harvested: October 13, 2009
Rows: Various
Product Tested: BECK 325NR™*

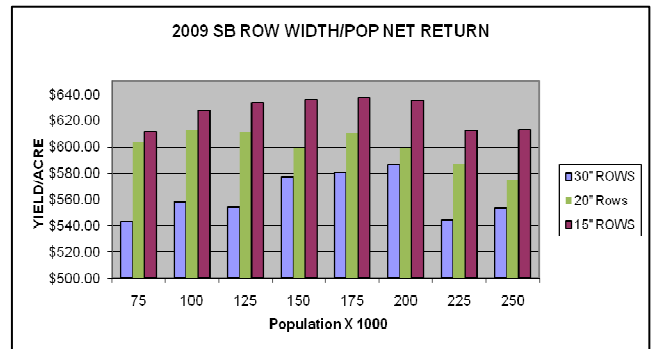
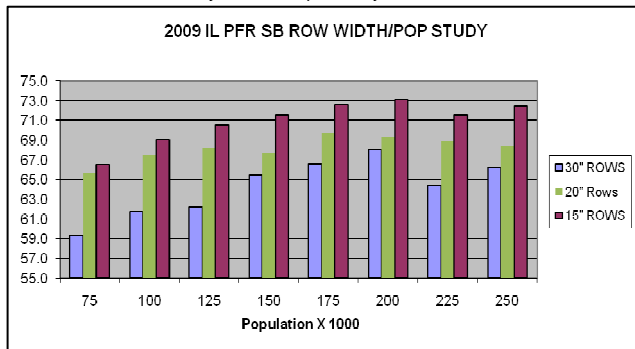
Seeding Rate: Various
Previous Crop: Corn
Tillage: Chisel / Field Cultivator
Herbicide: 64 oz. Glyphos Extra

RAINFALL	
April	10.0 in.
May	4.9 in.
June	4.6 in.
July	4.0 in.
August	3.6 in.
Total	27.1 in.

Purpose: In this study, we compared three row widths (15", 20", and 30") at multiple populations to determine net return when additional seed costs are incurred with higher seeding rates.

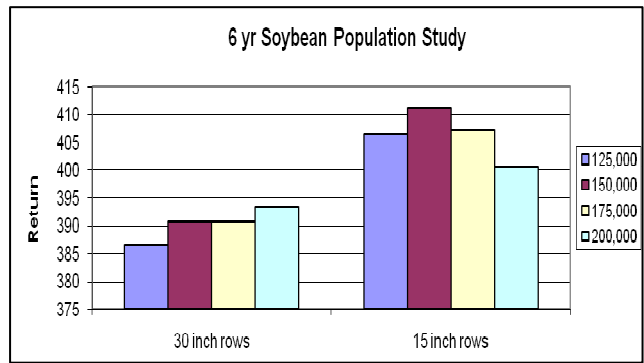
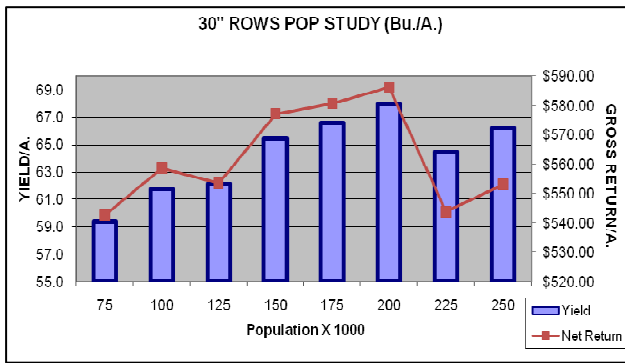
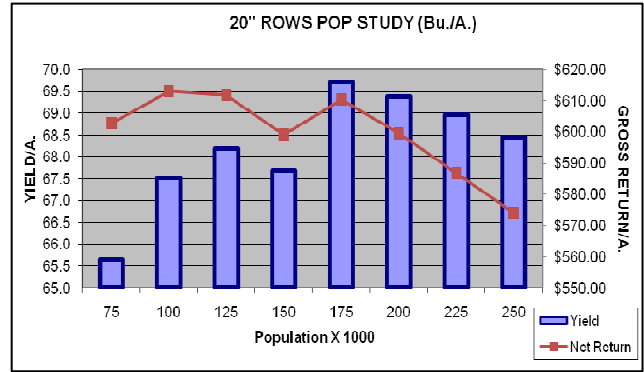
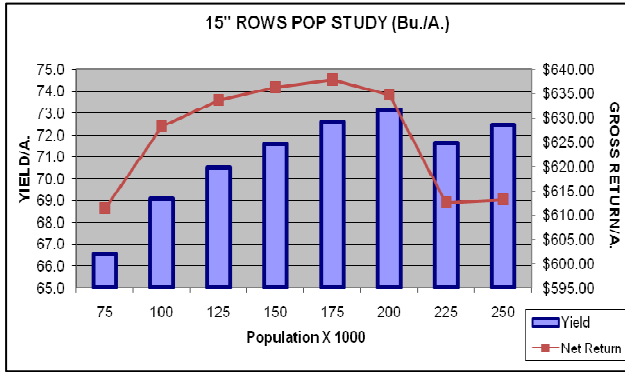
Planted Population	Bushels [†] Per Acre	Approx. Seed Cost	\$ Net Return [^]	Net Return Rank
15" ROWS				
75,000	66.5	\$23.75	\$611.32	8
100,000	69.1	\$31.67	\$628.24	5
125,000	70.5	\$39.59	\$633.69	4
150,000	71.6	\$47.50	\$636.28	2
175,000	72.6	\$55.42	\$637.91	1
200,000	73.1	\$63.34	\$634.77	3
225,000	71.6	\$71.26	\$612.52	7
250,000	<u>72.5</u>	<u>\$79.17</u>	<u>\$613.20</u>	6
AVERAGE	70.9	\$51.46	\$625.99	
20" ROWS				
75,000	65.6	\$23.75	\$602.73	4
100,000	67.5	\$31.67	\$612.96	1
125,000	68.2	\$39.59	\$611.72	2
150,000	67.7	\$47.50	\$599.03	6
175,000	69.7	\$55.42	\$610.21	3
200,000	69.4	\$63.34	\$599.43	5
225,000	68.9	\$71.26	\$586.74	7
250,000	<u>68.4</u>	<u>\$79.17</u>	<u>\$574.05</u>	8
AVERAGE	68.2	\$51.46	\$599.61	
30" ROWS				
75,000	59.3	\$23.75	\$542.56	8
100,000	61.8	\$31.67	\$558.52	4
125,000	62.1	\$39.59	\$553.47	5
150,000	65.4	\$47.50	\$577.07	3
175,000	66.6	\$55.42	\$580.61	2
200,000	68.0	\$63.34	\$586.06	1
225,000	64.4	\$71.26	\$544.76	7
250,000	<u>66.2</u>	<u>\$79.17</u>	<u>\$553.04</u>	6
AVERAGE	64.2	\$51.46	\$561.89	

[†]Bushels per acre corrected to 13% moisture. [^]Soybean price used is \$9.55/Bu.
 *XL Brand is distributed by Beck's Superior Hybrids, Inc.





Soybean Row Width & Population Study – Continued



Summary: Considering all plant populations, 15" rows averaged 70.9 Bu./A. and out yielded 20" and 30" rows by 2.7 and 6.7 Bu./A. respectively. 15" rows received the highest yield at 200,000 population, but after the figuring the cost of seed, 175,000 population obtained the highest return on investment. Six year data would suggest that 150,000 population on average is the most economic planting rate.

20" rows were very consistent, only varying 4.1 Bu./A. in all populations, but received the highest yield of 69.7 Bu./A. at 175,000 population. Due to low yield differences and consistent yields, 100,000 population obtained the highest return on investment.

30" rows varied 8.7 Bu./A. in all populations and received the highest yield of 68 Bu./A. at 200,000 seeds/A. This yield was high enough to justify the higher seed cost and obtained the highest return on investment for this row width. Six year data would suggest that 200,000 population on average is an economic planting rate. This seems very high for 30" rows, but it has been a trend that has been noticeable in Illinois PFR trials.

All three row widths received the highest yields at the 175,000 to 200,000 population level, but only the 30" rows had their most economic return at that rate. In comparing all three row widths at their best economic planting rates, 15" rows returned an additional \$24.95/A. compared to 20" rows, and \$51.85/A. compared to 30" rows.



"Beck's has a great program when it comes to their seed treatment. This treatment protects against a lot of secondary pests that we don't necessarily have time to go and scout for every day. It's like an extra insurance on your seed. Also helps to establish your stand because no matter what the stand, your input cost will remain the same. This helps to get a great stand the first time around."

Mike Swackhamer
Anderson, IN