

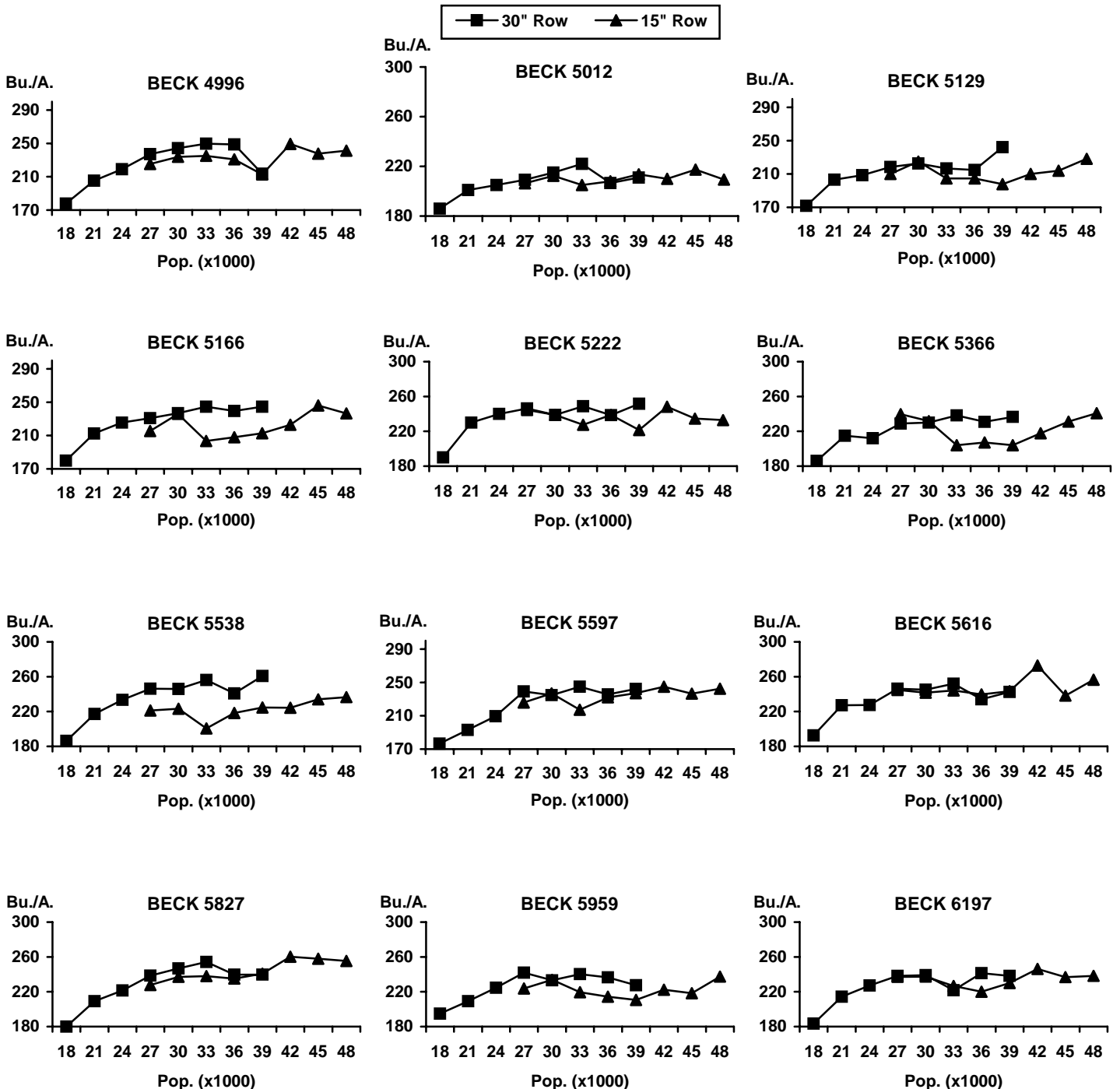
BECK'S 15" vs. 30" Row Corn Population Study - 2005

Location: D1 plot
Planted: April 14, 2005
Harvested: September 24, 2005
Rows: Four 15" rows
 Two 30" rows
Population: Various
Soil Type: Crosby

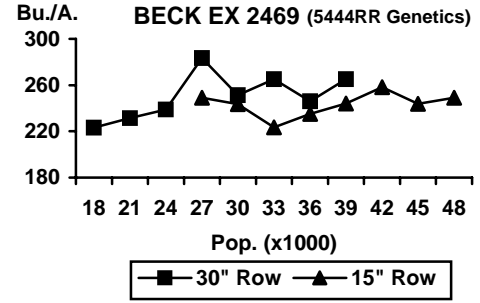
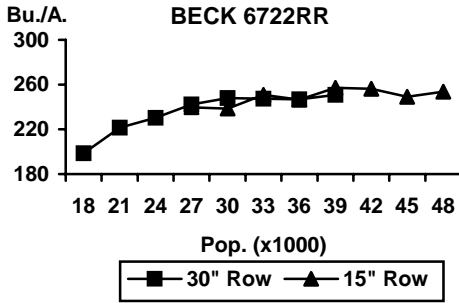
Previous Crop: Soybeans
Tillage: Zone-Till
Herbicide: PPI: 26 oz. Roundup Original Max
 1.0 qt. Princep
 Post: 1.6 qts. Lexar / 8 oz. Stinger
Insecticide: Aztec

RAINFALL	
April	3.4 in.
May	3.2 in.
June	4.0 in.
July	6.8 in.
August	3.3 in.
Total	20.7 in.

Purpose: An increasing number of farmers have shown an interest in 15" corn rows. This study compares fourteen hybrids in 15" and 30" row spacing at populations ranging from 18,000 to 48,000 to determine the performance difference between 15" and 30" rows and to provide hybrid specific data for farmers planting Beck products in 15" rows.



BECK'S 15" vs. 30" Row Corn Population Study – Cont.



Analysis by Population

Population	Row Spacing	Test Weight	% Root Lodging	% Stalk Lodging	% Moisture	Bu./A.	30" Row Advantage
18,000	30"	50.5	0.0	0.1	23.6	187.6	
21,000	30"	50.3	0.0	0.2	24.3	213.5	
24,000	30"	50.1	0.0	0.2	24.8	223.0	
27,000	30"	50.4	0.0	0.7	24.3	239.1	+9.8
	15"	50.8	0.0	1.8	23.3	229.3	
30,000	30"	50.6	0.0	0.4	24.1	238.0	+4.4
	15"	50.7	0.0	1.5	23.5	233.6	
33,000	30"	50.7	0.5	0.9	23.3	243.0	+21.6
	15"	51.4	0.0	2.6	23.0	221.4	
36,000	30"	50.8	0.2	2.8	23.5	235.8	+11.6
	15"	51.7	0.0	2.8	22.1	224.2	
39,000	30"	50.3	0.2	1.1	24.6	240.5	+15.5
	15"	51.4	0.0	3.3	22.6	225.0	
42,000	15"	50.8	0.0	3.7	23.2	238.9	
45,000	15"	50.7	0.0	5.4	23.4	235.4	
48,000	15"	50.9	0.0	5.4	23.0	239.9	
OVERALL AVG. FOR POPS. IN COMMON (27,000-39,000)	30"	50.6	0.2	1.2	24.0	239.3	+12.6
	15"	51.2	0.0	2.4	22.9	226.7	

Population Summary: We planted five populations in common in 15" and 30" rows (27,000-39,000). We also lowered the population to 18,000 – 24,000 on 30" rows and raised the population on 15" rows from 42,000 – 48,000. All hybrids responded negatively in 30" rows for populations below 27,000.

Summary for 15" Rows: Most hybrids' yield trends were upward as populations increased above 39,000. In fact, the average yield for populations above 39,000 in 15" rows was 11.4 bushels more than yields from 27,000 to 39,000. However, stalk lodging was 2 ½ times greater, but still averaged less than 6% for all hybrids.

Summary for 30" Rows: The average yield from populations of 27,000 to 39,000 was 1.2 bushels more than the 15" rows at the high populations of 42,000 to 48,000. In the five populations where 15" and 30" rows were in common (27,000 to 39,000), the 30" rows averaged 12.6 bushels per acre more yield.

Note: We planted the 15" corn rows with a 30" corn planter by setting the Auto-Guide Steering to plant 15" over from the first pass.